



**Koto City**

# Flood

Disaster evacuation map for when the embankment along Arakawa River collapses (maximum anticipated scale)

## Hazard Map

# Flooddepth

### Information on evacuation

In Koto City, the water level of Arakawa River, rain upstream, and future prospects of a typhoon are examined, and actions that one should take based on the warning level are announced as follows.

#### Emergency Safety Measures

A state in which a disaster is occurring or is imminent. Take the best action to guard your life.

**Alert Level 5**

<Be sure to evacuate by Alert Level 4!>

#### Evacuation Instruction

Evacuate to a place of refuge immediately. If you think it is difficult to head towards an evacuation site, evacuate to a safe location nearby, or to a safer place within your home.

**Alert Level 4**

#### Evacuation of the Elderly, Etc.

People who require time to evacuate (elderly, disabled persons, infants and small children, etc.) and their helpers should start evacuating. Others should prepare to evacuate.

**Alert Level 3**

#### Heavy Rain, Flood, or Storm Surge Advisories (Japan Meteorological Agency)

In preparation for evacuation, verify your own evacuation actions such as on a hazard map, etc.

**Alert Level 2**

#### Probability of Warnings (Japan Meteorological Agency)

Be on increased alert for disasters.

**Alert Level 1**

\*When you hear "Equivalent to Alert Level 5 / Equivalent to Alert Level 4 / Equivalent to Alert Level 3", etc.—information that contains the word "equivalent" is not information that is communicated by Koto City. Rather, it is information communicated by the national government, mass media, etc., based on water level and warning information. Even if you hear the expression, "Equivalent to Alert Level 3", this does not necessarily mean that the City will announce an evacuation instruction. Rain and river information will be comprehensively determined and communicated. (If you hear the word "equivalent" attached to an Alert Level, interpret as reporting from the national government, etc.)

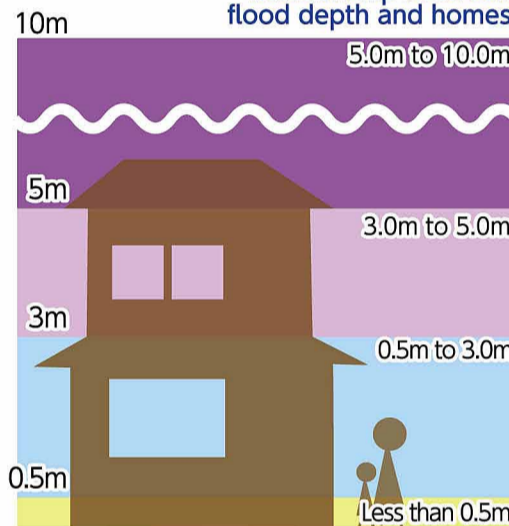
\*Since flooding may occur after a typhoon has passed, be vigilant make sure to check evacuation information thoroughly.

\*For details, see Pages 11 and 12 of the Koto City Flooding Storm Surge Booklet.



### Anticipated water depths when flooded

Relationship between flood depth and homes



### Judgment criteria

A.P.+7.70m Flood risk water level

A.P.+6.50m Evacuation judgment level

A.P.+4.10m Flood warning water level

**Iwabuchi Floodgate (Upper) Water Level Station**

\*The Iwabuchi Floodgate (Upper) is a water level station for observing water levels that serve as the standard for warnings. Koto City issues evacuations based on consultations using the water levels observed at Iwabuchi Floodgate (Upper).

### Legend (flooding)

- Camera location
- Water level observation station
- Disaster prevention information for rivers
- Places of refuge
- Major public facilities
- At high ground
- Areas that do not flood
- Areas with a park or plaza
- Areas that will be especially dangerous during flood damage
- Flood-prone areas such as due to house collapses, etc.
- Areas with fast currents and where there is a risk of wooden homes collapsing
- Underpasses
- Underpasses are lower than their surroundings, and require caution as it is easy for water to accumulate here

**Consider evacuating early to save your life!**

**Wide-area evacuation**

If there is a risk of the Arakawa River flooding due to continued heavy rainfall, consider evacuating in advance to the home of a relative or acquaintance in an area that will not be inundated.

**Emergency means to guard your life**  
**Vertical evacuation**

**Evacuate to a location higher than the anticipated water depth of your own building or nearest evacuation area (facility indicated by a ● on the map)**

### Try measuring the approximate distance and time

It takes roughly **15 minutes** to walk **1000m**.

It takes roughly 15 minutes to walk 1000m. However, more time may be required if there is a traffic jam, or depending on your physical strength. Measure the approximate distance, know how much time is required, and keep in mind to evacuate with plenty of time.



Koto City tourist mascot "Kotomi-chan"

### Arakawa River water system Arakawa River flood prone areas map

(Maximum anticipated scale)

Created by: MLIT Kanto Regional Development Bureau  
Arakawa-Karyu River Office  
Designated date: May 30, 2016

Rainfall targeted for observation  
72-hour total rainfall in Arakawa River basin 632mm

In Koto City, three types of hazard maps (flood, inland water, and storm surge) and the "Koto City Flooding Storm Surge Booklet" are currently available. This booklet contains information on evacuation during water-related disasters, the history of flood control measures in Koto City, and the mechanisms of flood and storm surge inundation. In addition, the information on these hazard maps is also available in audio format in the "Koto City audio version Water Disaster Hazard Map." Please refer to this as well.



●Flood hazard maps (floods, inland waters, storm surges)  
●Flooding Storm Surge Booklet  
(This is a Japanese language homepage)



Koto City audio version Water Disaster Hazard Map  
(This is a Japanese language homepage)

1 : 25,000

0 0.25 0.5 1 1.5 2 km



Koto City

# Flood Hazard Map

# Flooding Time

Save this map

## Inundation caused by flood water, anticipated conditions for draining water

Based on the maximum rainfall that can be anticipated, in Arakawa River, cases where the water level exceeds the river embankments and where the embankments collapse are anticipated.

It is anticipated that water that has accumulated in the city area due to flood water will be drained to rivers and canals using drainage facilities (drainage pump stations, pumping stations, etc.).

If drainage facilities flood or if fuel reserves run out, it is anticipated that drainage will no longer be possible.

## Legend for flooding duration

- Area with 2 or more weeks of flooding
- Area with 1 to 2 weeks of flooding
- Area with 3 days to 1 week of flooding
- Area with 1 to 3 days of flooding
- Area with 12 hours to 1 day of flooding
- Area with less than 12 hours of flooding

## Legend (flooding)

- Camera location
- Water level observation station
- Disaster prevention information for rivers
- Places of refuge
  - Major public facilities
    - At high ground
    - Areas that do not flood
    - Areas with a park or plaza
- Areas that will be especially dangerous during flood damage
  - Flood-prone areas such as due to house collapses, etc.
  - Areas with fast currents and where there is a risk of wooden homes collapsing
  - Underpasses



## What to keep in mind when evacuating

### Gather information

Pay attention to the latest information on the radio, TV and Internet.



### Pay attention to calls for evacuation

Once you confirm evacuation, take action in a calm manner.



### Wear clothes that you can easily move around in



### Evacuate calmly

Once you confirm evacuation, take action in a calm manner.



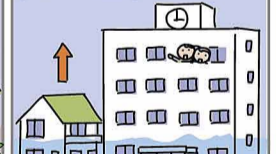
### Pay attention to the ground!

Because of flooding, it is difficult to identify dangers on the ground. Evacuate by paying attention to the ground.



### In the event that you are late to evacuate

Evacuate to a location higher than the anticipated water depth in your home or nearest public facility.



During Typhoon Hagibis (Typhoon 19) in 2019, water reached flooding risk levels, and conditions were very dangerous.



Arakawa River After Typhoon Hagibis (Typhoon 19 of 2019) passed through (Near Kita City, Iwabuchi Floodgate on October 13 around 1PM Approx. A.P.+7.01m (Approx. 70 cm lower than the flood danger water level))

1 : 25,000

0 0.25 0.5 1 1.5 2 km

## Try measuring the approximate distance and time



Koto City tourist mascot "Kotomi-chan"

1000m

It takes roughly 15 minutes to walk 1000m.

It takes roughly 15 minutes to walk 1000m. However, more time may be required if there is a traffic jam, or depending on your physical strength. Measure the approximate distance, know how much time is required, and keep in mind to evacuate with plenty of time.

## Arakawa River water system Arakawa River flood prone areas map (Flooding duration)

Created by: MLIT Kanto Regional Development Bureau  
Arakawa-Karyu River Office  
Designated date: May 30, 2016  
Rainfall targeted for observation  
72-hour total rainfall in Arakawa River basin 632mm