

Koto City Disaster Prevention Map



All Areas of Koto City



What is evacuation areas?

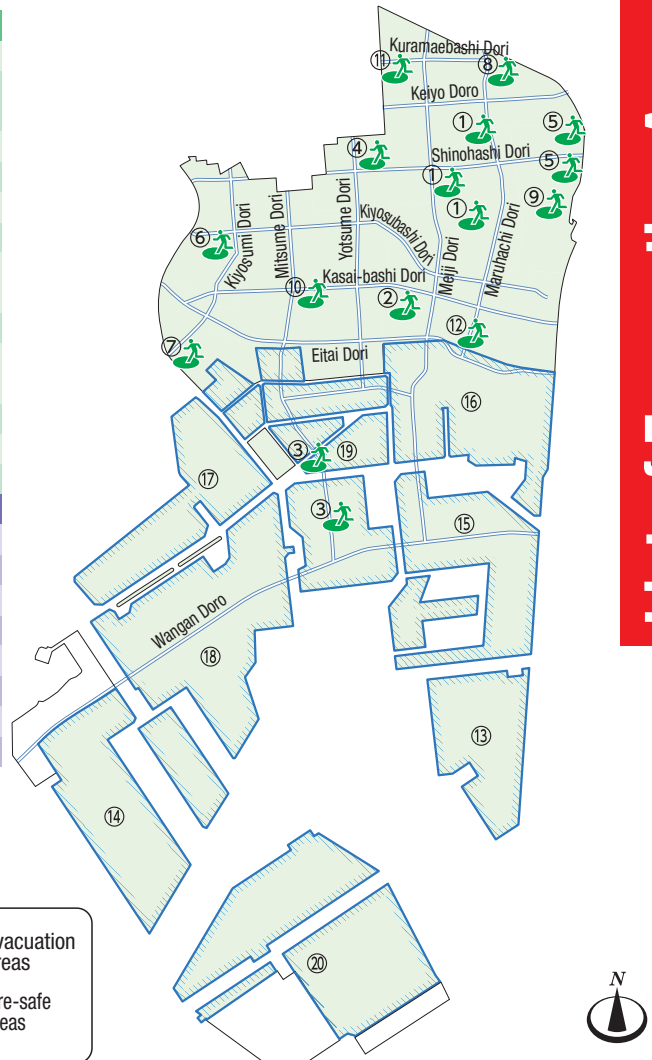
When a large earthquake occurs, it is important to protect ourselves from secondary disasters such as spreading fires that can potentially cost the lives of large numbers of people. The evacuation areas are designed to be places where people can take refuge temporarily. The Tokyo Metropolitan has designated 12 evacuation areas in Koto City.

What is fire-safe areas?

This refers to areas where large urban fires do not tend to occur. The Tokyo Metropolitan designates these areas as spots where residents are able to evacuate to a safe place within a short distance (about one block) even if a fire occurs, and where evacuations over long distances are not required.

Note: "Fire-safe areas" simply means people need not travel long distances to evacuate; in some cases, however, residents will need to take refuge in nearby open spaces.

- ◆Evacuation areas
 - ① Ojima & Kita-suna Housing Estate Tract
 - ② Public Corporation Minami-suna 2-chome Housing Complex Tract
 - ③ Sanjo Park Tract
 - ④ Kametaki & Ojima & Komatsugawa Area
 - ⑤ Kiyosumi Garden Area
 - ⑥ Tokyo University of Marine Science and Technology Tract
 - ⑦ Kametaki-chuu park Area
 - ⑧ Minamipen Higashi-suna 2-chome Housing Tract
 - ⑨ Kita Park Tract
 - ⑩ Kametaki 2-chome Housing Estate Tract
 - ⑪ Minami-suna 3-chome park Tract
- ◆Fire-safe areas
 - ⑫ Wakusa Area
 - ⑬ Asaka & Higashi-yashio & Daiba Area
 - ⑭ Shin-Kita & Yumotochima Area
 - ⑮ Shin-suna Area
 - ⑯ Toyosu Area
 - ⑰ Arakawa & Shinonome Area
 - ⑱ Tatsumi & Shiori & Edagawa Area
 - ⑲ Central Breakwater Reclamation Area



List of Evacuation Areas

This leaflet uses different colors to indicate points that people should note, depending on the situation.

Information

Gather information on a regular basis so that you are better prepared for any disasters.

Plan

Confirm ahead of time what steps you will take in the event of a disaster.

Evacuation

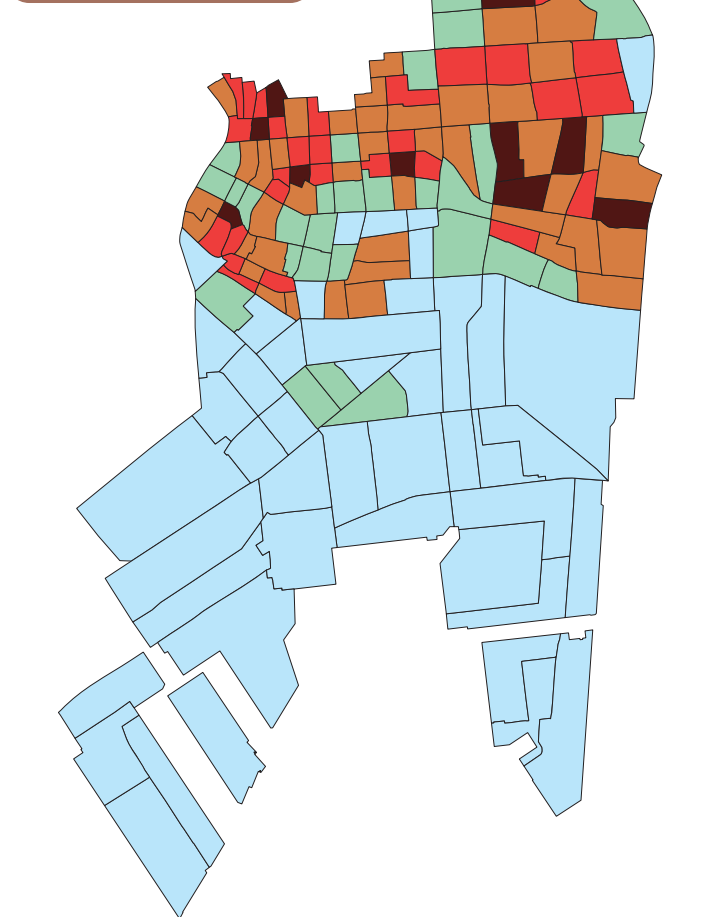
If a disaster does occur, don't panic! Instead, stay calm and take the appropriate steps.

Regional Risk Assessment Survey Results

Rank 5 4 3 2 1 Low risk

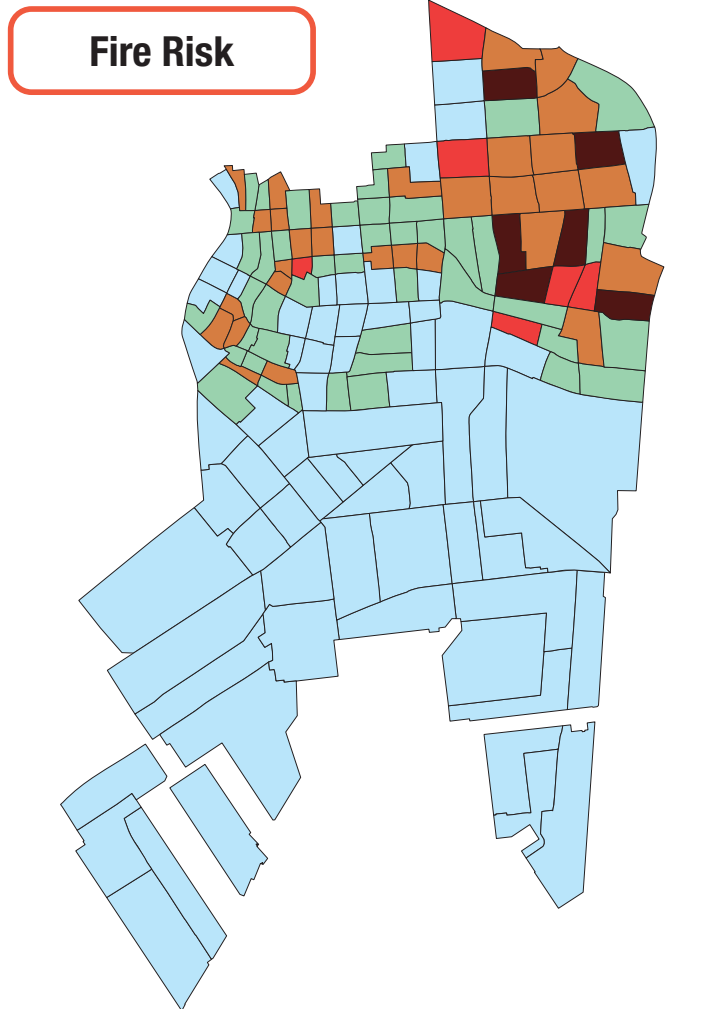
High risk

* Each section in Koto City was ranked based according to the results of risk assessment.



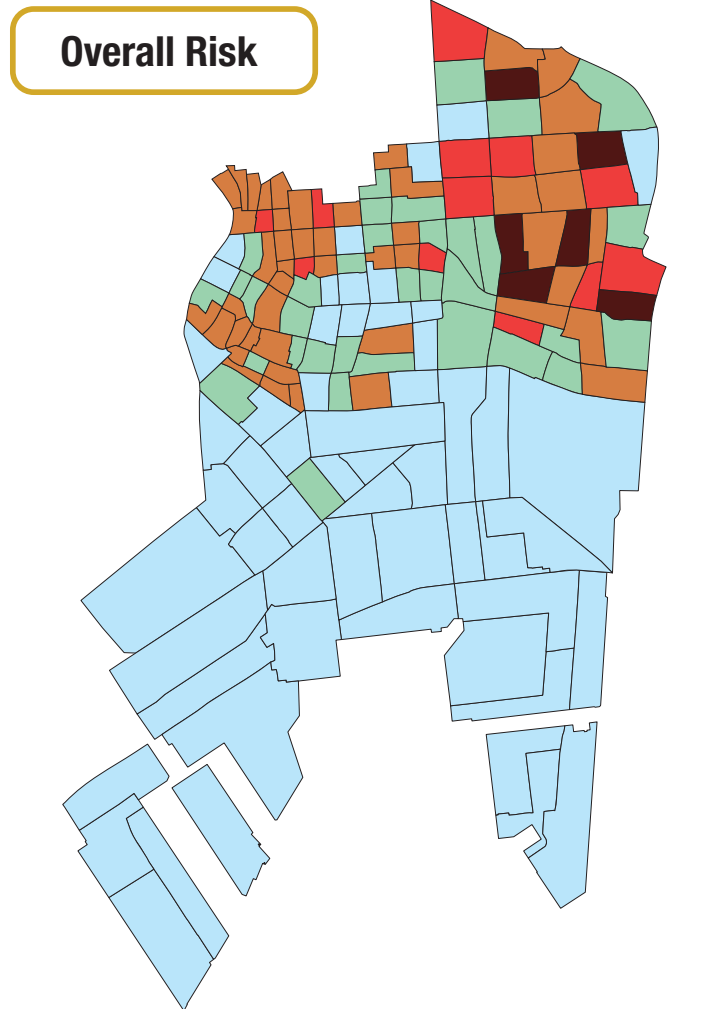
Building collapse risk is assessed by evaluating the danger of buildings collapsing or tilting due to earthquakes. It takes into consideration the characteristics of the ground in the area (possibility of greater shaking/vibration, liquefaction), characteristics of area buildings (structure and age), and building density. Because the ground under Koto City has numerous weak spots, any shaking from an earthquake can easily be amplified, engendering a relatively higher risk level.

Fire Risk



Fire risk is assessed by identifying the possibility of damage caused by spreading of earthquake-induced fires. The assessment is a combination of the likelihood of fire starting in the area (presence of numerous flammable structures and vulnerability to shaking) plus the likelihood of spreading fire (density and structure of buildings). Even if the location itself is not prone to fire outbreaks, there remains the risk of fire spreading from other areas. This risk is also added into the equation.

Overall Risk



In addition to building collapse risk and fire risk, disaster relief initiative difficulty coefficient (degree of difficulty in evacuation, firefighting, rescue, and other disaster response activities due to road conditions, etc.) is added in to create a single index. It is hoped that this index will be useful in helping residents to consider how to address earthquakes and prepare for them.

Keep Your Preparations Up to Date on an Ongoing Basis

- Participate in training**

If you haven't taken steps to prepare for a disaster before it occurs, it is virtually impossible to respond appropriately. In order to be able to take the appropriate steps during times of disaster and minimize damage, it is important to participate in training on a regular basis.
- Prepare emergency supplies to carry with you**

Gather together any emergency supplies you would require in case you need to evacuate, and put these into a backpack or similar bag so that you can leave with these supplies at any time.
- Make your home safer**

To avoid fires and other secondary disasters, secure large furniture in place, place anti-shatter film on glass, take steps to keep kerosene stoves from toppling, install earthquake-sensitive circuit breakers, etc.
- Hold a family meeting**

There is nothing more unsettling than the idea of family members being separated during a disaster. Hold a family meeting, and be sure to cover topics such as where to meet, how to use the Disaster Emergency Message Dial system, etc.
- Identify the nearest evacuation area from your house ahead of time**

Decide not only on evacuation centers or areas where you will evacuate, but also where you will all meet before you evacuate. In case you are unable to take your usual route due to fallen buildings, etc., it is key to determine a number of alternate routes. In anticipation of any problems returning to your home, it is critical to identify locations where you can obtain water, utilize restrooms, get information, etc.

How to Obtain Information in the Event of Disaster

Disaster and evacuation information can be obtained in a variety of ways. In addition to TV and radio, continue to check daily to learn where information is available.

Administrative Radio System for Disaster Prevention

Speakers have been installed at elementary and junior high schools as well as parks in the city. Normally, chimers are broadcast in the evening to confirm function.

Disaster Early Warning Mail / Area Mail

You can receive text information from the city or the Japan Meteorological Agency on your mobile phone without having to worry about system congestion. Registration is not required on compliant mobile phone models. Information is received free of charge. (*Service provided through each mobile phone company)

Koto Anzen-e-mail Mail ("Koto City Safety Mail")

Registering your e-mail address enables you to receive weather and disaster information, the content of disaster administration radio broadcasts, emergency information (J-Alert) issued by the government, crime prevention information, etc. Send a blank email to "anzen.koto-city@radnet.ktiwork.jp" to subscribe. You can also subscribe from the 2D code on the right.

Koto City Disaster Prevention App / Koto City Disaster Prevention Portal

The Koto City Disaster Prevention App can be downloaded from the 2D code on the right. The following information can be checked on the Koto City Disaster Prevention App.

- Daily traffic information, weather information, etc. during normal times
- In the event of disaster, in addition to information provided during normal times, information on damage in the city and information on the opening of evacuation centers, etc. is available
- *The operating system of your mobile phone needs to be iOS 13 or higher, or Android 9 or higher.

The same content posted on the Koto City Disaster Prevention App is available on the Koto City Disaster Prevention Portal.

Koto City Disaster Prevention Official X (formerly Twitter)

The Koto City Disaster Prevention Official X (formerly Twitter) provides the following content at @koto_bosai.

- Disaster prevention topics and other relevant information from the City during normal times.
- In the event of disaster, information about disaster prevention, details of the disaster, messages encouraging residents to evacuate, etc.

Other Information Sources

In addition, disaster-related information is provided via Koto City LINE, Facebook, cable TV, community FM, Yahoo! Disaster Prevention Bulletin, etc.

List of Supplies to be Carried in Case of Emergency

Primary supplies to be carried in case of emergency

- Water**

About three liters per person per day
- Emergency food supplies**

Pay attention to expiration dates on food for emergency consumption.
- Portable toilet**

Prepare for 5 times per day
- Portable radio**

Hand-crank-charging-type is preferable.
- First aid items**

Include antipyretics and cold medicine.
- Hygienic products**

Masks, sanitary goods, diapers, sanitizing wipes, etc.
- Mobile battery**

Dry cell-type is safer for power outages.
- Cash**

ATMs may not be available due to damage to machines and power outages.
- Other**

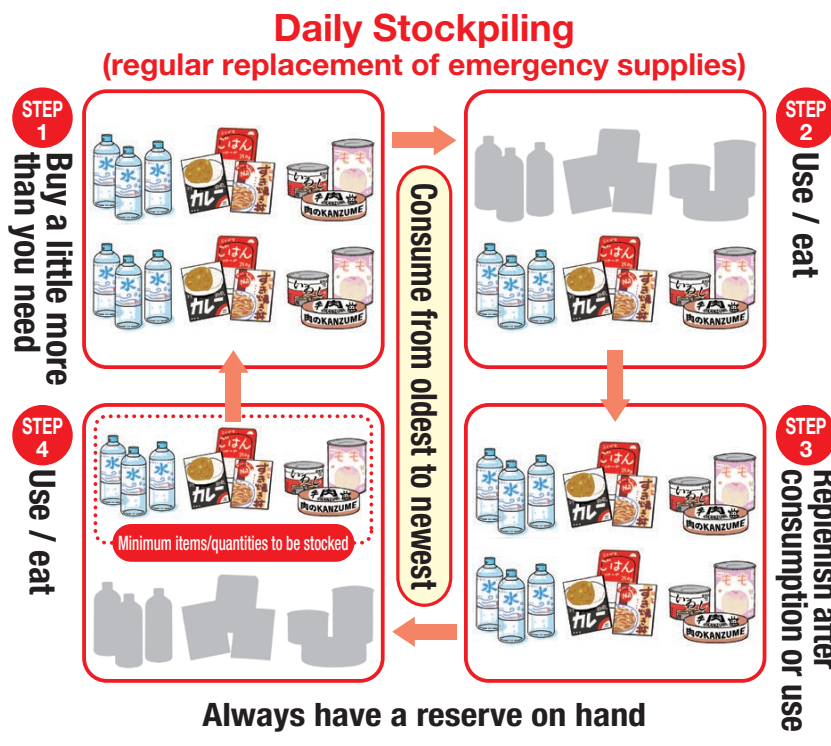
Helmets, clothing, work gloves, multi-tools, medicines, etc.

Note the importance of preparing supplies ahead of time in case of disaster. See the list of supplies shown on the left, and prepare emergency supplies on a daily basis so that they can be taken out at any time. In addition, to ensure that the supplies will be useable when you need them, inspect them about twice a year, noting expiration dates.

Daily Stockpiling

It is essential to have the food and daily necessities at home. The key to stockpiling is to always purchase a little more of what you usually use.

In terms of amount, anticipate and plan for damage to life- and supply lines by stockpiling a minimum of three days' worth. In addition to this, keep in mind that even as distribution gradually recovers, it is not certain that you will be able to obtain what you need immediately. For this reason, it is a good idea to stockpile enough for one week or more.



Things to Do Immediately After an Earthquake Occurs

- When an earthquake strikes**

First and foremost, take steps to protect yourself.
To protect yourself from falling objects, hide under a desk and move away from large furniture. Wear shoes or slippers to protect your feet from injury.
- After the shaking stops**

First, put out any fires.
If using fire, remain calm and prevent the fire from getting out of hand when the big shaking stops.
- When the fire is extinguished**

Ensure exits are free and clear.
Open windows, interior doors, and the front door to enable evacuation at any time.
- After confirming your safety**

Check the status of your home.
If your home or apartment is not safe, evacuate with emergency items.
- Check before evacuation**

Do not forget to check the main breaker and main gas valve.
Switch off the main breaker and shut off the main gas valve before evacuating.
- Checking the neighborhood safety**

Help each other in your neighborhood.
There is a limit to what each person is able to do alone, so work together with your neighbors to extinguish fires, and help neighbors who need assistance to evacuate.

Ten Things to Remember to Ensure a Safe Return Home in the Event of a Disaster

- Do not panic. Instead, check your surroundings.**
- Carry a portable radio in your pocket.**
- Get a map indicating the way home ready ahead of time.**
- Keep sneakers in your locker (along with other disaster prevention items).**
- Store chocolate, caramel, etc. in your desk (ready-to-eat packaged foods).**
- Discuss disaster prevention with your family ahead of time (how to get in touch with each other, where to meet, etc.).**
- Check on the safety of family and friends using the Disaster Emergency Message Dial system or through intermediary relatives.**
- Practice walking home in the event of a disaster in case you are unable to get home by other means.**
- Bring items to help keep cool or warm, depending on the season (portable disposable heating pads, towels, etc.).**
- Use a system of check-in with neighbors and helping each other.**

Evacuating in the Event of Large-scale Flooding

Where large-scale flooding is forecast, a call for evacuation will be broadcast over the municipal disaster prevention radio system or similar system by the Koto City Office or the fire department.

If you hear an evacuation announcement, promptly evacuate to public facilities or temporary evacuation centers indicated by Koto City. In such event, it is important to evacuate to higher floors. If your home is safe, it is advisable to remain (shelter-in-place) in principle.

Temporary evacuation centers

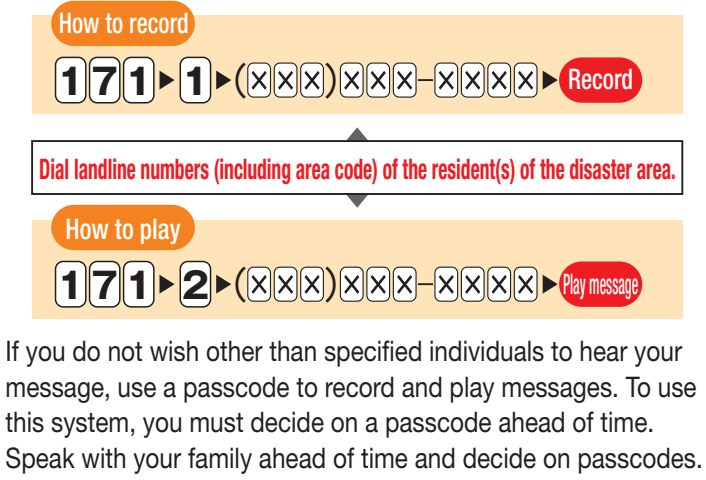
In Koto City, as a strategy to address large-scale flooding caused by flooding of the Arakawa River, tsunami, etc., Koto City has agreements with specified corporations to provide temporary centers.

■ Services provided
Where large-scale flooding has occurred, designated floors in corporate buildings or residential complexes (in general third floor or higher) will be opened to evacuees. (For corporations, generally this is only where a disaster has occurred during working hours.)

■ Time period when facilities are open
● Large-scale flood damage occurs
Koto City issues an official evacuation order, etc.
● Tsunami occurs
Large tsunami warning issued for Tokyo Bay
* If you are unable to reach a center designated by Koto City, you may evacuate on an emergency basis to shared areas of municipal housing.

Disaster Emergency Message Dial System

The Disaster Emergency Message Dial system is a special service operated during times of disaster, including earthquakes, at which time people may have difficulty getting through on the telephone due to extremely high call volume. This recorded message system can be used to communicate with family and friends regarding the safety of individuals, where to meet, etc. Koto City residents can practice using the system on the dates noted below. Try it out so that you know how to use it in the instance of disaster. (Refer to the following dates available to practice using the service)

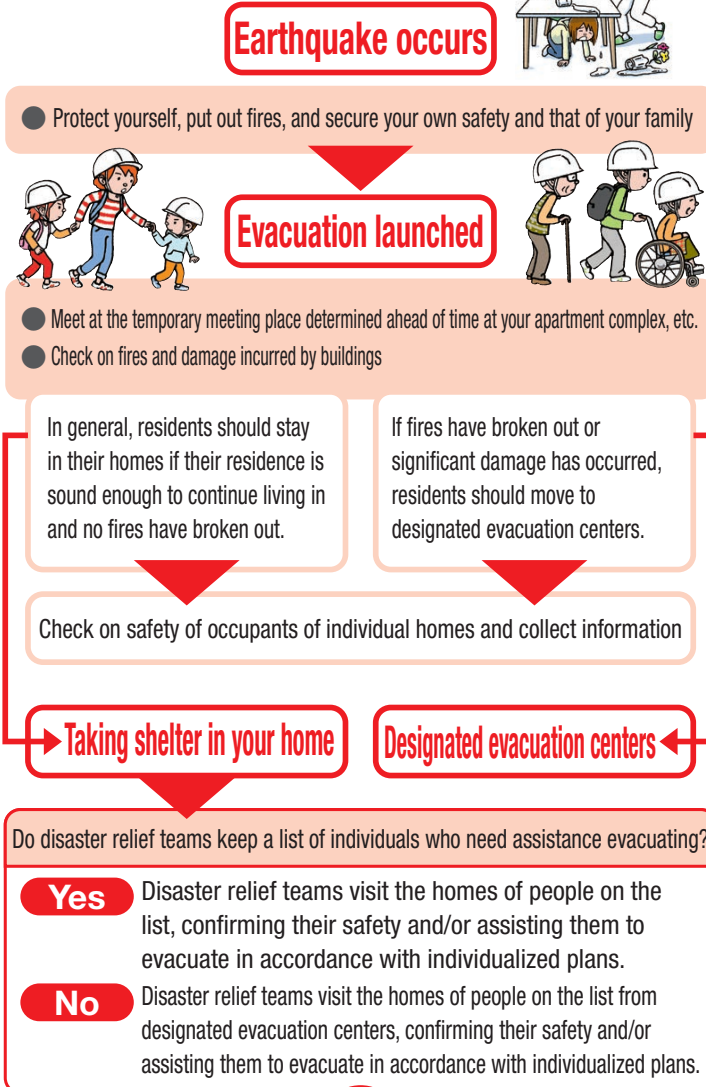


- Dates available practice using the service
- 1st and 15th of every month
 - Disaster Prevention and Volunteer Week (January 15th-January 21st)
 - First three days of the year (January 1st-3rd)
 - Disaster Prevention Week (August 30th-September 5th)

Evacuating from High-rise Residential Buildings

In the event of an earthquake, it is possible to evacuate to shelters set up at elementary and junior high schools. If your home or apartment building was built to meet earthquake resistance and seismic isolation standards, then "shelter-in-place" (remain in your own home) is the first choice if the structure is safe after an earthquake.

If you are able to remain in your own home, and you live in a condominium or residential complex, please take the following actions. It is especially important that you work with disaster relief teams.



List of Evacuation Centers

Evacuation centers are set up by the City for residents unable to live in their homes following a disaster such as an earthquake. Such centers are opened at municipal elementary schools, junior high schools, high schools, public facilities, and private facilities, depending on the size of the disaster. Municipal elementary and junior high school, which are opened first, are considered designated evacuation centers. In addition to taking evacuees, they also function as follows: (1) Provide primary services such as checking on the safety of people in the area at an early stage; (2) Provide emergency medical services; (3) Distribute food, water, and daily commodities to people taking shelter in their homes; and (4) Act as a hub for regional information-gathering.

Please use this map to find your nearest evacuation center as well as the nearest designated evacuation center.

Evacuation centers	Address	Map reference
Shirakawa Area		
○ Fukagawa E.Sch.	14-10 Takabashi E-4	
○ Yanagawa E.Sch.	3-15 Shin-ohashi D-4	
○ Motokaga E.Sch.	4-3-19 Shirakawa F-5	
○ Fukagawa Daian J.H.Sch.	4-9-22 Morishita E-6	
○ Fukagawa Dairoku J.H.Sch.	3-6-13 Hirano F-5	
○ Sumida H.Sch. of Technology	5-1-7 Morishita F-4	
○ Fukagawa Welfare Center for Seniors / Hirano Children's House	1-2-3 Hirano E-5	
○ Fukagawa Library	3-3-39 Kiyosumi E-5	
○ Morishita Children's House / Morishita Nursery Sch.	3-14-6 Morishita E-4	
○ Morishita Culture Center	3-12-7 Morishita E-4	
○ Shirakawa Nursery Sch.	1-7-1 Shirakawa E-4	
○ Shirakawa Komatsu Nursery Sch.	1-5-101 Shirakawa E-4	
○ Fukagawa Kita Support Center for Family	14-6 Takabashi E-4	
○ Motokaga Kindergarten	4-9-17 Shirakawa F-4	
○ Fukagawa-Kita Sports Center	3-2-20 Hirano E-5	
○ Nakamura J.H.Sch. / H.Sch.	2-3-15 Kiyosumi D-5	
○ K International Sch.	1-5-15 Furushiba E-5	

Tomioka Area

Evacuation centers	Address	Map reference
○ Meiji E.Sch.	2-17-26 Fukagawa E-5	
○ Rinkai E.Sch.	1-16 Morzen-rakacho D-6	
○ Etchujima E.Sch.	3-6-38 Etchujima D-7	
○ Katsuyama E.Sch.	1-18-7 Tomioka E-6	
○ Fukagawa Daian J.H.Sch.	22-10 Toyosu D-9	
○ Fukagawa Daian J.H.Sch.	3-7-1 Etchujima D-7	
○ Daian Commercial H.Sch.	3-3-1 Etchujima D-7	
○ Furushiba Welfare Center for Seniors / Furushiba Children's House	1-11-11 Furushiba D-6	

Evacuation centers	Address	Map reference
○ Toyosu E.Sch.	4-4-4 Toyosu E-9	
○ Toyosu-nishi E.Sch.	5-1-35 Toyosu D-8	
○ Toyosu-Kita E.Sch.	3-6-1 Toyosu E-9	
○ Shinonome E.Sch.	2-4-11 Shinonome E-10	
○ Edagawa E.Sch.	3-5-3 Edagawa F-8	
○ Tatsumi E.Sch.	1-11-11 Tatsumi F-10	
○ Daini-tatsumi E.Sch.	1-1-22 Tatsumi F-9	
○ Arakawa E.Sch. / Arakawa J.H.Sch.	2-1-51 Arakawa D-11	
○ Fukagawa Daigo J.H.Sch.	4-11-16 Toyosu E-9	
○ Fukagawa Daihachi J.H.Sch.	2-21-14 Shiohama F-7	
○ Tatsumi J.H.Sch.	1-10-57 Tatsumi F-10	
○ Arakawa-nishi Gakuen Compulsory Education School	1-7-13 Arakawa C-11	
○ Edagawa Community Center	3-6-16 Edagawa F-8	
○ Toyosu Children's House	4-10-111 Toyosu E-9	
○ Shinonome Children's House	2-4-1-102 Shinonome E-10	
○ Tatsumi Children's House	1-1-36 Tatsumi F-10	
○ Shiohama Nursery Sch.	1-3-10 Shiohama E-7	
○ Shiozaki Nursery Sch.	2-6-3 Shiohama F-8	
○ Shinonome Nursery Sch.	1-8-5-101 Shinonome E-10	
○ Shinonome Dai Dai Nursery Sch.	2-4-1-103 Shinonome E-10	
○ Tatsumi Dai Dai Nursery Sch.	1-10-91 Tatsumi F-9	
○ Tatsumi Dai Dai Nursery Sch.	3-12-7 Morishita E-4	
○ Shiomi Nursery Sch.	1-29-15-101 Shiomi G-8	
○ Toyosu Nursery Sch.	4-5-8 Toyosu E-9	
○ Edagawa Kindergarten	3-4-1-101 Edagawa F-8	
○ Hibari Kindergarten	2-4-1-103 Shinonome E-10	
○ Toyosu Support Center for Family	5-5-1-201 Toyosu D-9	
○ Toyosu Civic Center	2-5-16 Toyosu D-9	
○ Arakawa Sports Center	2-3-5 Arakawa C-12	
○ Granchari Shinonome	1-9-46 Shinonome F-8	
○ Environmental Learning Information Museum Ekokouru Koto	3-7-5 Toyosu D-8	
○ Shibaura Industrial College (Toyosu Campus)	1-11-26 Edagawa E-8	
○ Tokyo Korean Primary Sch. 2	1-11-26 Edagawa E-8	

Toyosu Area

Evacuation centers	Address	Map reference
○ Heikyu E.Sch.	1-2-2 Kiba E-7	
○ Toyo E.Sch.	3-27-12 Toyo G-6	
○ Nanyo E.Sch.	2-1-20 Toyo F-7	
○ Toyo J.H.Sch.	2-1-8 Toyo F-7	
○ Toyo Children's House	5-16-13 Toyo F-8	
○ Toyo Welfare Center For Seniors	6-17-10 Toyo F-6	
○ Toyo Nursery Sch.	3-22-1-101 Toyo F-6	
○ Nanyo Kindergarten	2-1-14 Toyo F-7	
○ Education Center / Toyo Library	2-3-6 Toyo G-7	
○ Toyo Community Center / Toyo Support Center for Family	3-1-2 Toyo F-7	
○ Koto City Cultural Center	4-11-13 Toyo G-6	
○ Hotel East 21 Tokyo	6-3-3 Toyo G-6	

Kameido Area

Evacuation centers	Address	Map reference
○ Sengen E.Sch.	2-9-12 Sengoku G-5	
○ Ougibashi E.Sch.	18-5 Iijima F-3	
○ Mori E.Sch.	2-2-2 Mori G-5	
○ Toson E.Sch.	1-12-5 Sumiyoshi F-4	

Evacuation centers	Address	Map reference
○ Fukagawa Dayon J.H.Sch.	1-12-12 Sengoku F-5	
○ Fukagawa Daihana J.H.Sch.	1-14-1 Mori F-3	
○ Oedo H.Sch.	3-2-11 Sengoku G-5	
○ Koto Civic Auditorium (Tara Koto)	2-28-36 Sumiyoshi G-4	
○ Senda Welfare Center for Seniors / Senda Children's House	21-18 Senda G-5	
○ Sarue Nursery Sch.	1-8-10 Sarue F-4	
○ Mori Nursery Sch.	2-1-14 Mori G-3	
○ Senda Nursery Sch.	22-8 Senda G-5	
○ Tsukubane Kindergarten	3-20-13-101 Ogibashi G-4	
○ Children's Plaza	1-9-8 Sumiyoshi F-4	
○ Center for Promotion of Gender Equality	3-22-2 Ougibashi G-4	

Toyo Area

Evacuation centers	Address	Map reference
○ Heikyu E.Sch.	1-2-2 Kiba E-7	
○ Toyo E.Sch.	3-27-12 Toyo G-6	
○ Nanyo E.Sch.	2-1-20 Toyo F-7	
○ Toyo J.H.Sch.	2-1-8 Toyo F-7	
○ Toyo Children's House	5-16-13 Toyo F-8	
○ Toyo Welfare Center For Seniors	6-17-10 Toyo F-6	
○ Toyo Nursery Sch.	3-22-1-101 Toyo F-6	
○ Nanyo Kindergarten	2-1-14 Toyo F-7	
○ Education Center / Toyo Library	2-3-6 Toyo G-7	
○ Toyo Community Center / Toyo Support Center for Family	3-1-2 Toyo F-7	
○ Koto City Cultural Center	4-11-13 Toyo G-6	
○ Hotel East 21 Tokyo	6-3-3 Toyo G-6	

Kameido Area

Evacuation centers	Address	Map reference
○ Daiichi-kameido E.Sch.	2-5-7 Kameido G-2	
○ Daiichi-kameido E.Sch.	6-36-1 Kameido H-3	
○ Katori E.Sch.	4-26-22 Kameido H-1	
○ Sengen-tatekawa E.Sch.	9-22-4 Kameido H-2	
○ Sujin E.Sch.	5-22-22 Kameido H-2	
○ Kameido J.H.Sch.	9-2-2 Kameido J-3	
○ Daini-kameido J.H.Sch.	4-51-1 Kameido I-2	
○ Daisan-kameido J.H.Sch.	1-12-10 Kameido G-3	
○ Koto Commercial 1 Sch.	4-50-1 Kameido H-2	
○ Kameido Children's House	2-1-19 Kameido G-2	
○ Kameido Welfare Center for Seniors / Kameido Daisan Nursery Sch.	1-2-4 Kameido H-3	
○ Kameido Nursery Sch.	6-5-9-101 Kameido I-3	
○ Kameido Welfare Center for Family	4-21-13 Kameido H-2	
○ Youth Exchange Plaza / Kameido Daini Nursery Sch.	7-41-16 Kameido I-3	
○ Kameido Dai Dai Nursery Sch.	7-39-9 Kameido I-2	
○ Kameido Sports Center	6-22-1 Kameido I-2	

Evacuation centers	Address	Map reference
○ Kameido Welfare Center for Seniors	9-33-2-101 Kameido J-2	
○ Kameido Culture Center	2-19-1 Kameido H-2	
○ Chugokoku University Chuo H.Sch.	7-65-12 Kameido I-3	
○ Antelion	1-43-22 Kameido G-2	
○ Long-Term Care Health Facility, Key Stone	3-36-1 Kameido G-1	
○ Special Nursing Home, Elderly Camella	3-36-5 Kameido G-1	

Ojima Area

Evacuation centers	Address	Map reference
Daiichi-ōjima E.Sch.	2-41-4 Ōjima	H-3
Daiichi-ōjima E.Sch.	3-16-2 Ōjima	H-3
Daisan-ōjima E.Sch.	9-5-3 Ōjima	J-3
Dayon-ōjima E.Sch.	6-7-8 Ōjima	I-3
Daigo-ōjima E.Sch.	8-40-13 Ōjima	J-4
Ojima-nano E.Sch.	4-18-5 Ōjima	I-4
Ojima J.H.Sch.	8-12-22 Ōjima	H-4
Daiichi-ōjima J.H.Sch.	3-27-18 Ōjima	H-3
Ojima-nishi J.H.Sch.	4-1-23 Ōjima	H-4
Joto H.Sch.	3-22-1 Ōjima	H-3
Tokai Metropolitan H.Sch. of Science and Technology	1-2-31 Ōjima	G-4
General Culture Center	4-5-1 Ōjima	H-4
Ojima Children's House	7-28-1-104 Ōjima	I-3
Ojima Daiichi Children's House	4-5-1 Ōjima	H-4
Ojima Nursery Sch.	5-40-4 Ōjima	I-4
Ojima Daiichi Nursery Sch.	4-16-130 Ōjima	H-4
Ojima Daisan Nursery Sch.	6-1-16-130 Ōjima	I-3
Ojima Dayon Nursery Sch.	8-12-20-101 Ōjima	I-4
Ojima Daigo Nursery Sch.	4-21-3-101 Ōjima	I-4
Wakaba Nursery Sch.	9-7-8-101 Ōjima	J-3
Ojima Kindergarten	5-38-1 Ōjima	I-4
Daisan-ōjima Kindergarten	7-28-2-101 Ōjima	J-3
Higashi-ōjima Culture Center	8-3-9 Ōjima	H-4
Ojima Support Center for Family	4-1-37 Ōjima	H-4
Kyu-daisan-ōjima J.H.Sch.	1-20-20 Ōjima	I-4
Kyu-ōjima-minami H.Sch.	5-22-5 Ōjima	I-4