



Koto City Flood Hazard Map

Disaster evacuation map for when the embankment along Arakawa River collapses (maximum anticipated scale)

Flooddepth

Save this map

Information on evacuation

In Koto City, the water level of Arakawa River, rain upstream, and future prospects of a typhoon are examined, and actions that one should take based on the warning level are announced as follows.

Emergency Safety Measures

A state in which a disaster is occurring or is imminent. Take the best action to guard your life.

Alert Level 5

<Be sure to evacuate by Alert Level 4!>

Evacuation Instruction

Evacuate to a place of refuge immediately. If you think it is difficult to head towards an evacuation site, evacuate to a safe location nearby, or to a safer place within your home.

Alert Level 4

Evacuation of the Elderly, Etc.

People who require time to evacuate (elderly, disabled persons, infants and small children, etc.) and their helpers should start evacuating. Others should prepare to evacuate.

Alert Level 3

Heavy Rain, Flood, or Storm Surge Advisories (Japan Meteorological Agency)

In preparation for evacuation, verify your own evacuation actions such as on a hazard map, etc.

Alert Level 2

Probability of Warnings (Japan Meteorological Agency)

Be on increased alert for disasters.

Alert Level 1

*When you hear "Equivalent to Alert Level 5 / Equivalent to Alert Level 4 / Equivalent to Alert Level 3", etc.—information that contains the word "equivalent" is not information that is communicated by Koto City. Rather, it is information communicated by the national government, mass media, etc., based on water level and warning information. Even if you hear the expression, "Equivalent to Alert Level 5", this does not necessarily mean that the City will announce an evacuation instruction. Rain and river information will be comprehensively determined and communicated. (If you hear the word "equivalent" attached to an Alert Level, interpret as reporting from the national government, etc.)

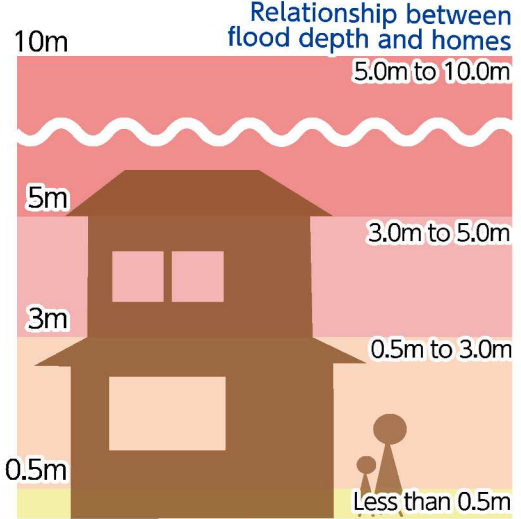
*Since flooding may occur after a typhoon has passed, be vigilant and make sure to check evacuation information thoroughly.

*For details, see Pages 11 and 12 of the Koto City Flooding Storm Surge Booklet.

Koto City disaster prevention information homepage

(This is a Japanese language homepage.)

Anticipated water depths when flooded



*The colors used here give consideration to people who have difficulty with color vision.
*A version with different colors is available on the Koto City homepage.

Judgment criteria

A.P.+7.70m Flood risk water level

This can flood at any time! Evacuate before that happens.

A.P.+6.50m Evacuation judgment level

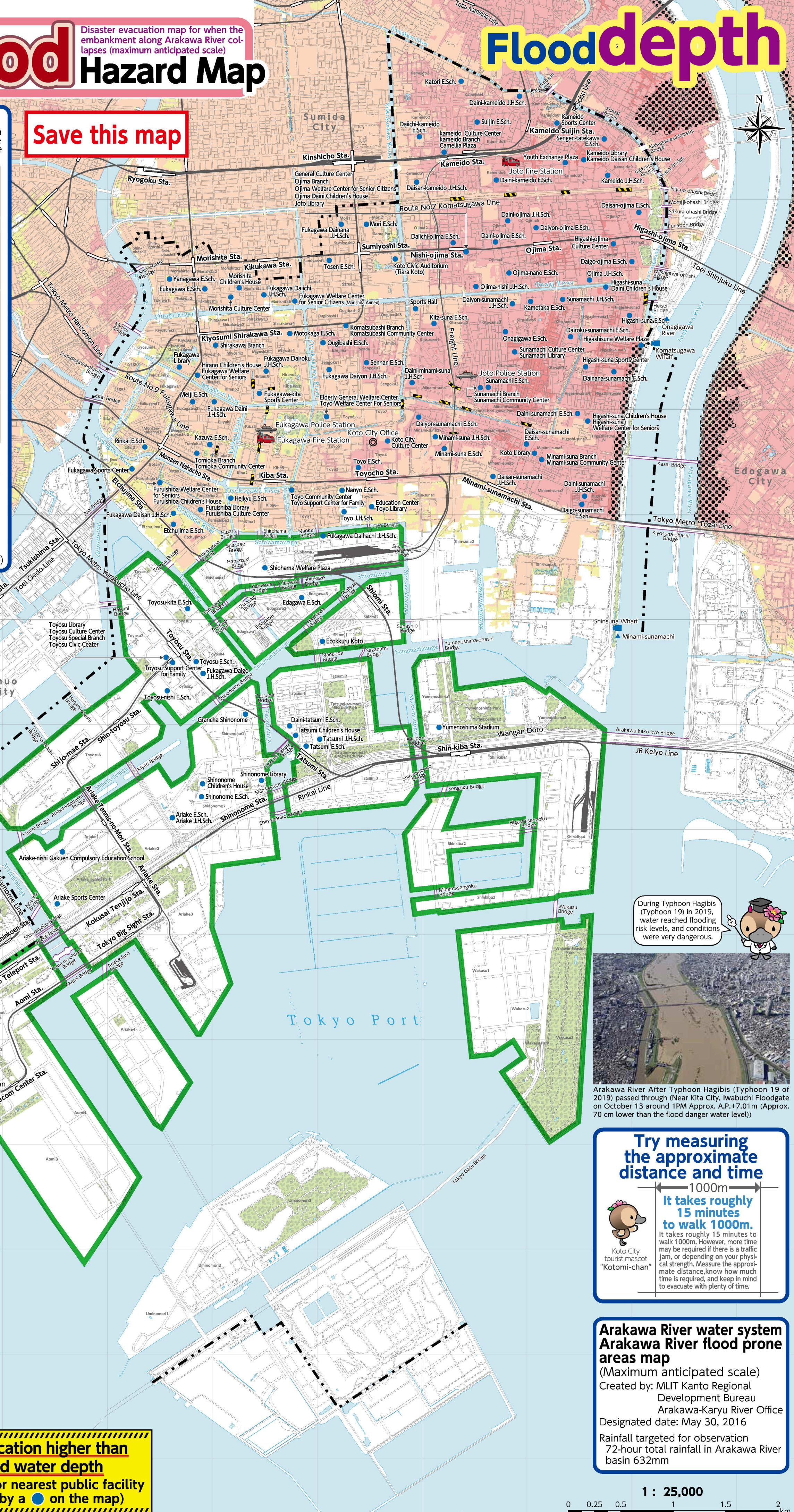
A.P.+4.10m Flood warning water level

Iwabuchi Floodgate (Upper) Water Level Station

*The Iwabuchi Floodgate (Upper) is a water level station for observing water levels that serve as the standard for warnings. Koto City issues evacuations based on consultations using the water levels observed at Iwabuchi Floodgate (Upper).

Legend (flooding)

- Camera location
- Water level observation station
- Disaster prevention information for rivers
- Places of refuge
- Major public facilities
- Evacuation areas are:
 - At high ground
 - Areas that do not flood
 - Areas with a park or plaza
- Areas that will be especially dangerous during flood damage
- Flood-prone areas such as due to house collapses, etc. Areas with fast currents and where there is a risk of wooden homes collapsing
- Underpasses
- Underpasses are lower than their surroundings, and require caution as it is easy for water to accumulate here



During Typhoon Hagibis (Typhoon 19) in 2019, water reached flooding risk levels, and conditions were very dangerous.



Arakawa River After Typhoon Hagibis (Typhoon 19 of 2019) passed through (Near Kita City, Iwabuchi Floodgate on October 13 around 1PM Approx. A.P.+7.01m (Approx. 70 cm lower than the flood danger water level))

Try measuring the approximate distance and time

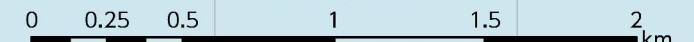
It takes roughly 15 minutes to walk 1000m.

It takes roughly 15 minutes to walk 1000m. However, more time may be required if there is a traffic jam, or depending on your physical strength. Measure the approximate distance, know how much time is required, and keep in mind to evacuate with plenty of time.

Arakawa River water system Arakawa River flood prone areas map

(Maximum anticipated scale)
Created by: MLIT Kanto Regional Development Bureau
Arakawa-Karyu River Office
Designated date: May 30, 2016
Rainfall targeted for observation
72-hour total rainfall in Arakawa River basin 632mm

1 : 25,000



Emergency means to guard your life Vertical evacuation

Evacuate to a location higher than the anticipated water depth of your own building or nearest public facility (facility indicated by a ● on the map)



Koto City

Flood Hazard Map

Flooding Time

Save this map

Inundation caused by flood water, anticipated conditions for draining water

- Based on the maximum rainfall that can be anticipated, in Arakawa River, cases where the water level exceeds the river embankments and where the embankments collapse are anticipated.
- It is anticipated that water that has accumulated in the city area due to flood water will be drained to rivers and canals using drainage facilities (drainage pump stations, pumping stations, etc.).
- If drainage facilities flood or if fuel reserves run out, it is anticipated that drainage will no longer be possible.

Legend for flooding duration

- Area with 2 or more weeks of flooding
- Area with 1 to 2 weeks of flooding
- Area with 3 days to 1 week of flooding
- Area with 1 to 3 days of flooding
- Area with 12 hours to 1 day of flooding
- Area with less than 12 hours of flooding

*The colors used here give consideration to people who have difficulty with color vision.
*A version with different colors is available on the Koto City homepage.

Legend (flooding)

- Camera location
- Water level observation station
- Places of refuge
- Major public facilities
- Evacuation areas
- Areas that will be especially dangerous during flood damage
- Flood-prone areas such as due to house collapses, etc.
- Underpasses are lower than their surroundings, and require caution as it is easy for water to accumulate here

What to keep in mind when evacuating

Gather information
Pay attention to the latest information on the radio, TV and Internet.

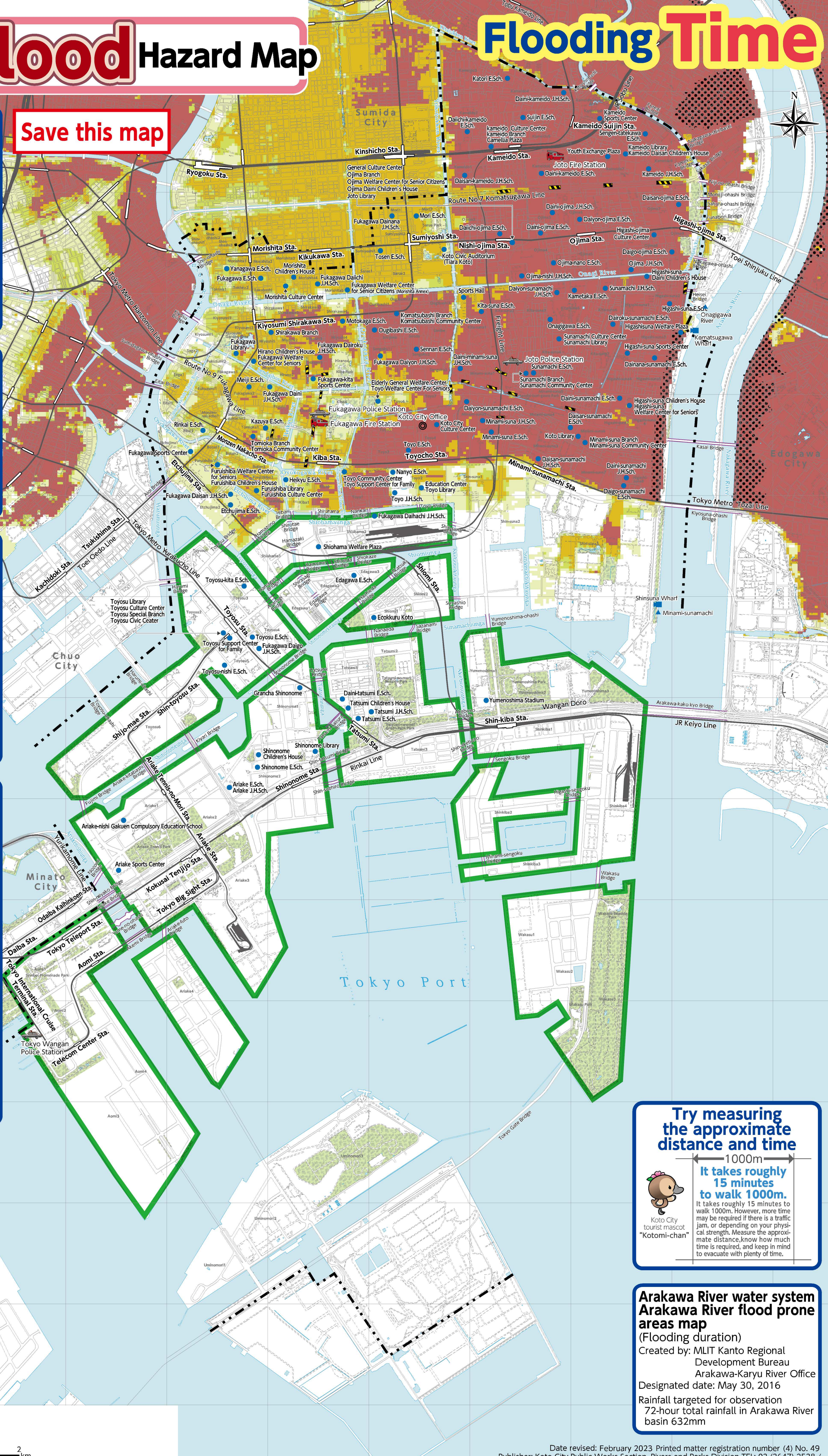
Pay attention to calls for evacuation

Evacuate calmly
Once you confirm evacuation, take action in a calm manner.

Wear clothes that you can easily move around in

Pay attention to the ground!
Because of flooding, it is difficult to identify dangers on the ground. Evacuate by paying attention to the ground.

In the event that you are late to evacuate
Evacuate to a location higher than the anticipated water depth in your home or nearest public facility.



Try measuring the approximate distance and time

1000m

It takes roughly 15 minutes to walk 1000m.

It takes roughly 15 minutes to walk 1000m. However, more time may be required if there is a traffic jam, or depending on your physical strength. Measure the approximate distance, know how much time is required, and keep in mind to evacuate with plenty of time.

Koto City tourist mascot "Kotomi-chan"

Arakawa River water system Arakawa River flood prone areas map (Flooding duration)

Created by: MLIT Kanto Regional Development Bureau
Arakawa-Karyu River Office
Designated date: May 30, 2016
Rainfall targeted for observation
72-hour total rainfall in Arakawa River basin 632mm

1 : 25,000

